

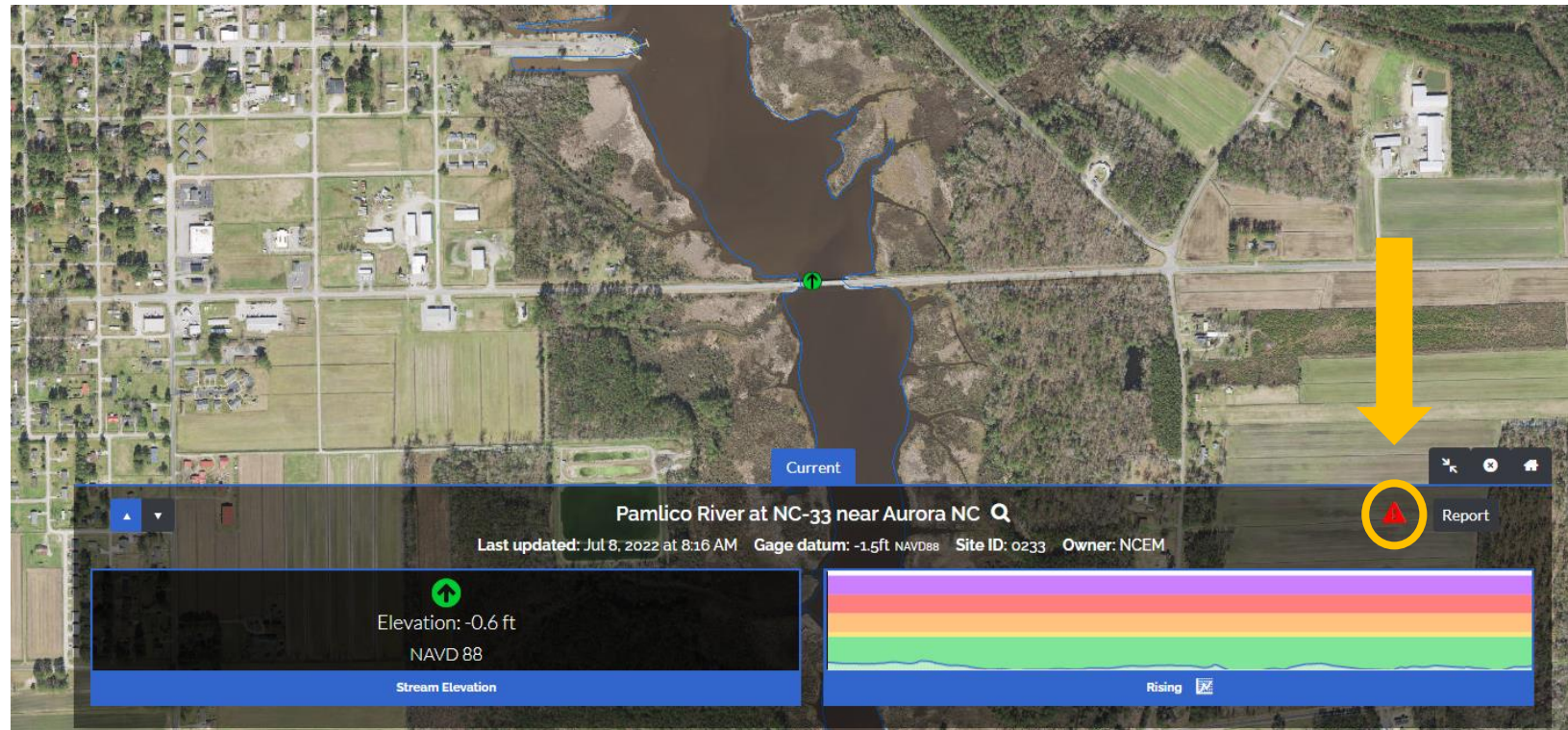
NC Department
of Public Safety



FIMAN ALERTS SET UP AND REMOVAL

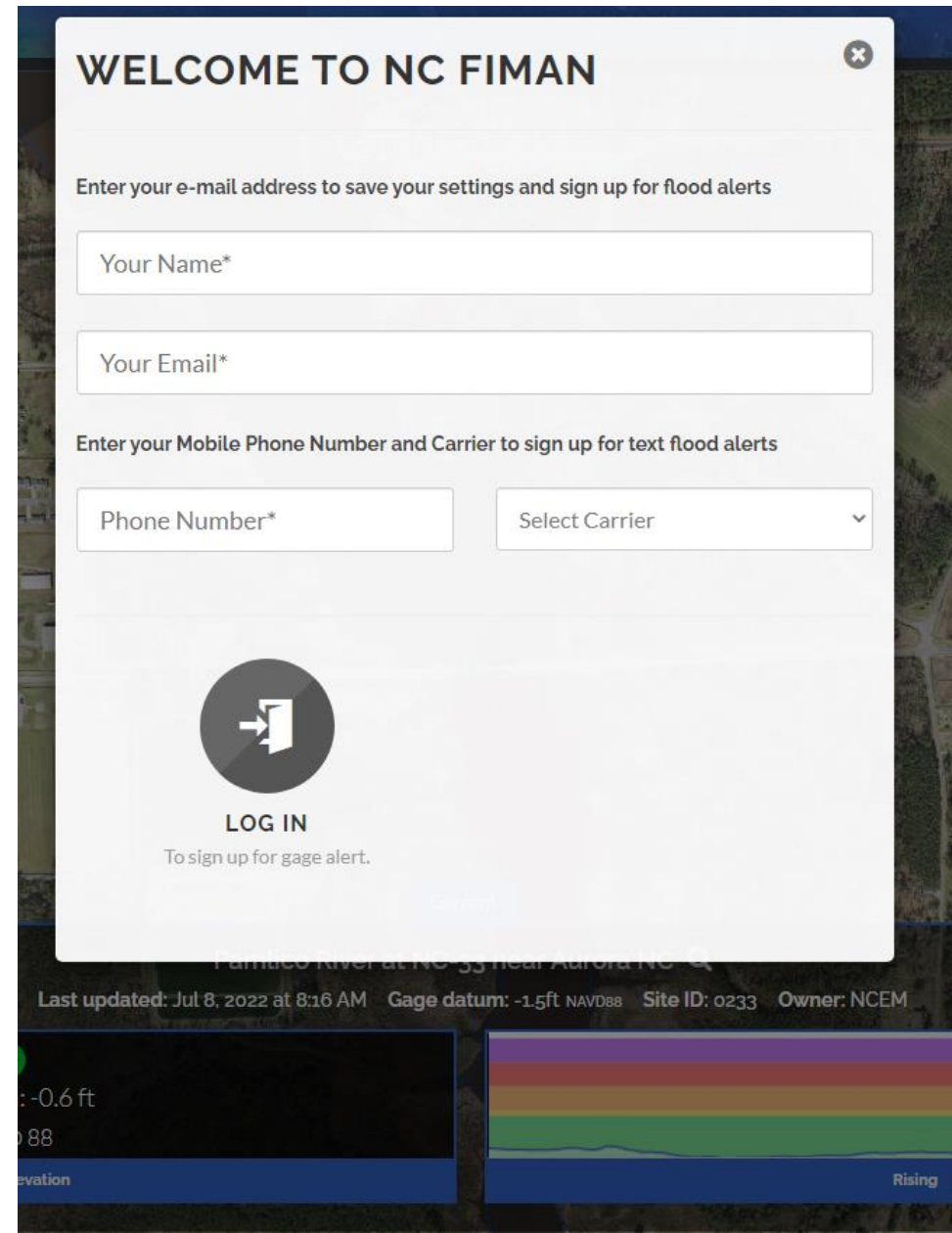
FIMAN Alert Subscription

- Navigate to [NC Flood Inundation Mapping and Alert Network](#)
- Select the desired Gauge station
- Click on the red triangle on the station's 'dashboard'



Subscription cont...

- Fill in the desired contact method/information for which alerts will be sent.



WELCOME TO NC FIMAN ✕

Enter your e-mail address to save your settings and sign up for flood alerts


Your Name*

Your Email*

Enter your Mobile Phone Number and Carrier to sign up for text flood alerts

Phone Number*

Select Carrier ▼



LOG IN

To sign up for gage alert.

[Cancel](#)

Farmaco River at NC 55 near Aulora NC

Last updated: Jul 8, 2022 at 8:16 AM Gage datum: -1.5ft NAVD88 Site ID: 0233 Owner: NCEM

-0.6 ft

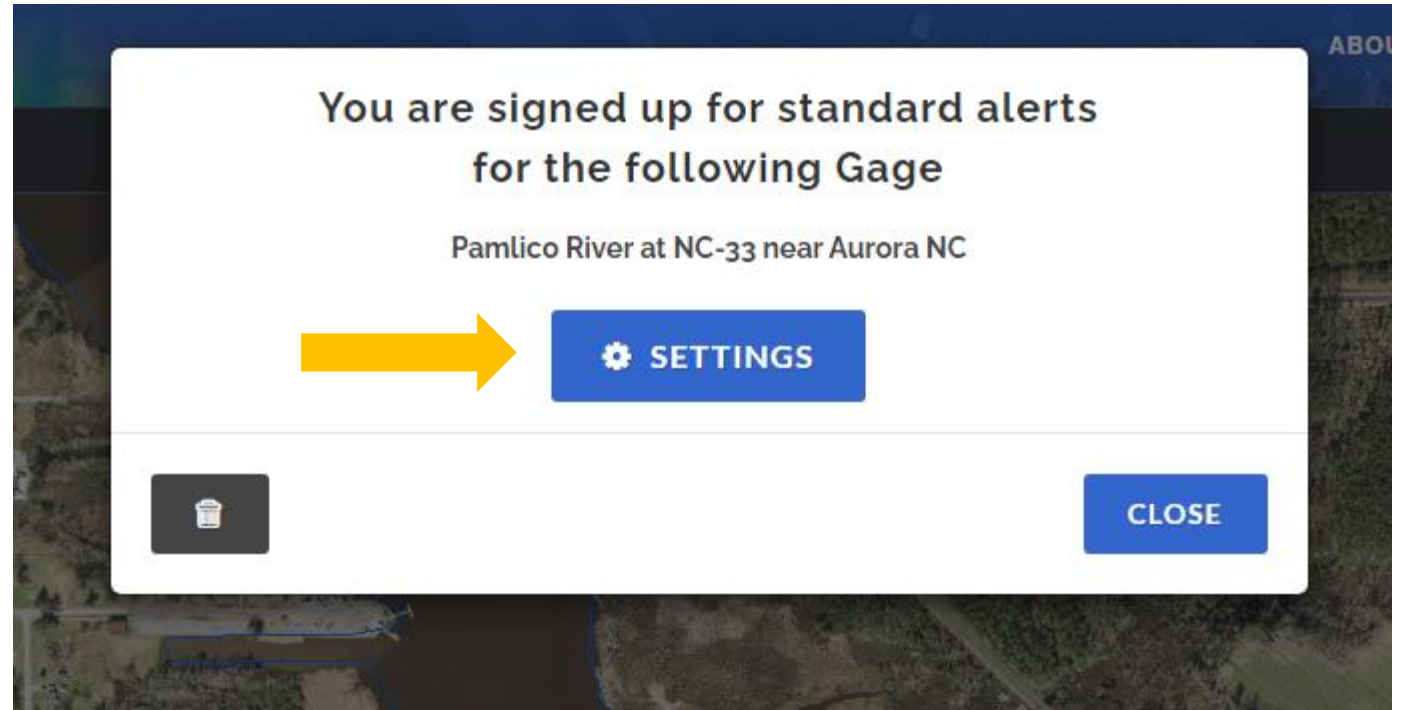
88

elevation

Rising

Subscription complete

- You will receive confirmation that you have successfully subscribed to alerts from that gage station
- You can then click on the 'settings' button to specify the alert conditions



Alert settings

- Unique stage conditions can be added using the 'add new alert' button
- Stage conditions can be turned off by clicking on the trash can icon
- Select alert condition button
- Save the alert settings

ALERT SETTINGS
Colington Cut

Alerts My Account

+ ADD NEW ALERT

Stage	
5.0 ft.	Major Flooding
4.0 ft.	Moderate Flooding
2.5 ft.	Minor Flooding
1.5 ft.	Monitor

ALERTS WILL BE SENT WHEN THE FOLLOWING CONDITIONS ARE MET:
Click to Activate/Deactivate

☒ Rises Above ☒ Falls Below

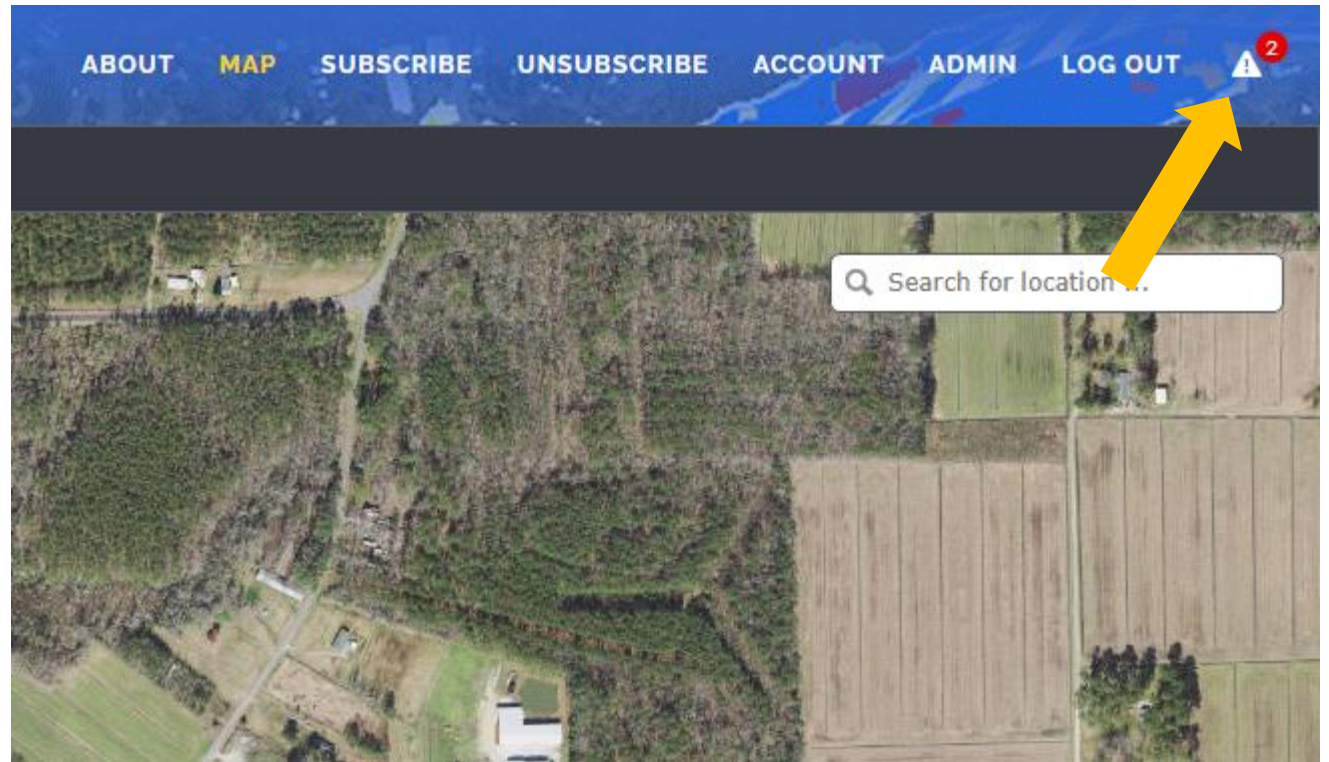
Selected conditions will be applied to all gage alerts.

Unsubscribe

CANCEL SAVE

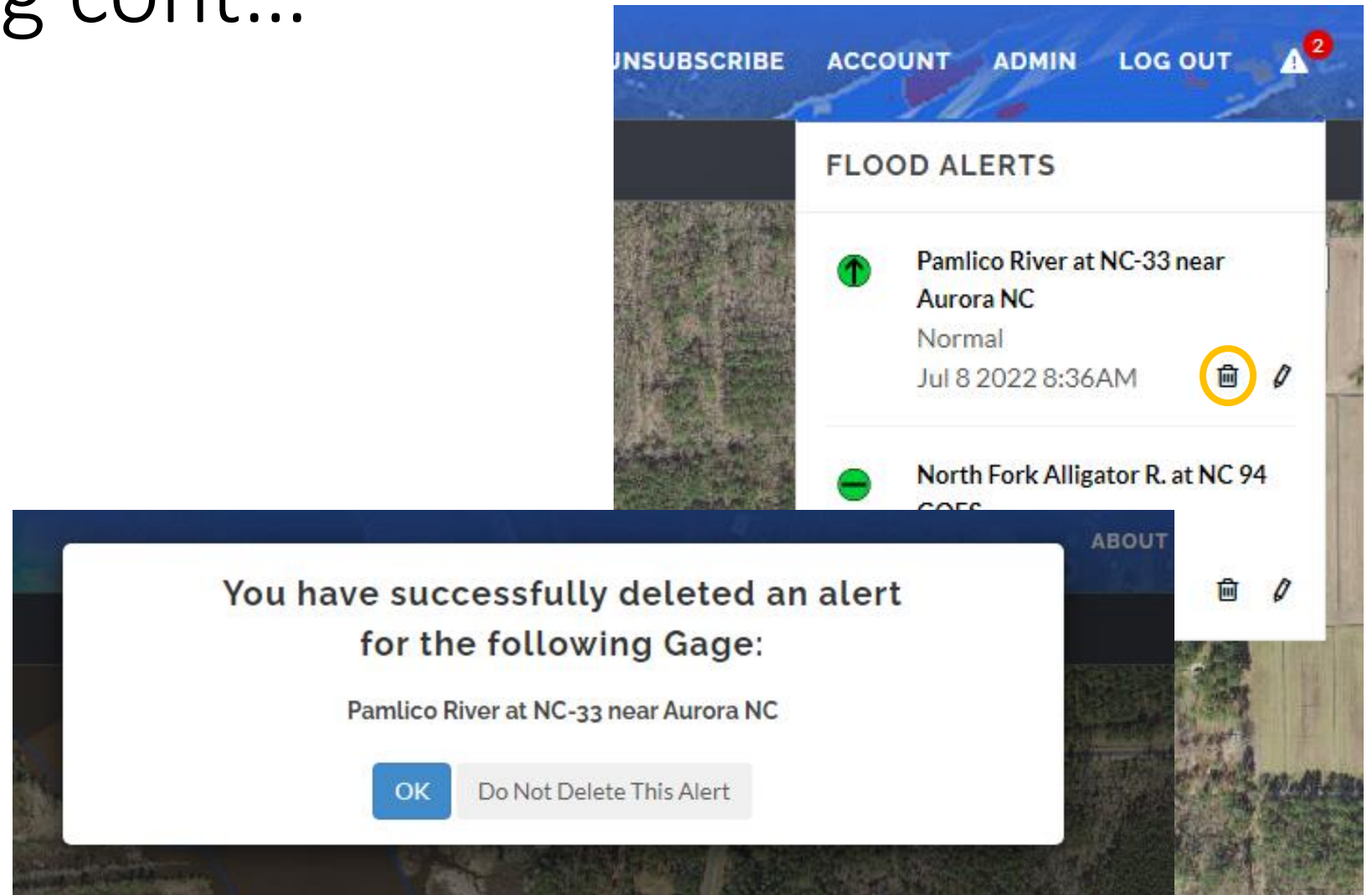
Unsubscribing from alerts

- Navigate to [NC Flood Inundation Mapping and Alert Network](#)
- Select the alert triangle in the upper right corner of the page



Unsubscribing cont...

- From the list of gages in the drop-down menu, select the trash bin icon to unsubscribe.
- Confirm you want to cancel alerts from the station



Questions?

- Any assistance with FIMAN contact the helpdesk at:
 - fimanhelp@ncdps.gov

